



Public meeting McGill University Health Centre Board of Directors

March 25, 2019

16:30 - 18:00



Dr. Sarah Prichard

Vice-Chair – MUHC Board of Directors

- 1. Call to Order**
- 2. Quorum**
- 3. Approval of the Agenda**
- 4. Chairman's Remarks**
- 5. Approval of the previous meeting minutes (January 28, 2019)**
- 6. Business arising from previous minutes**
- 7. Approval of the Consent Items Resolutions**
- 8. Report of the President and Executive Director**
- 9. Question Period**
- 10. Varia**



Dr. Sarah Prichard

Vice-Chair – MUHC Board of Directors

4. Chairman's Remarks

- **Mandate given to the Governance & Ethics Committee**



Dr. Sarah Prichard

Vice-Chair – MUHC Board of Directors

- 5. Approval of the previous meeting minutes (January 28, 2019)**
- 6. Business arising from previous minutes**
- 7. Approval of the Consent Items Resolutions**



Dr. Pierre Gfeller

President and Executive Director

8. Report of the President and Executive Director

8.1 Update by the President Executive Director on current matters



Rapport du président-directeur général

Bienvenue aux nouveaux cadres supérieurs

- Directrice adjointe des soins infirmiers de l'Hôpital de Lachine
 - *Chantale Bourdeau*

- Directrice générale adjointe - Soutien, administration et performance
 - *Patricia Lefebvre*



Rapport du président-directeur général

- Clinique de colposcopie à Lachine
 - ✓ Consolidation des services afin que chaque hôpital se concentre sur sa mission respective :
 - Transfert des services de colposcopie à l'Hôpital de LaSalle (2 jours / mois)
 - Programme complet de santé des hommes à l'Hôpital de Lachine (urologie)
 - ✓ Toutes les patientes seront rejointes pour organiser le transfert vers CH LaSalle (7 km de l'Hôpital de Lachine)
 - ✓ Projet MSSS-CUSM- CIUSSS ODIM
 - 2016



Rapport du président-directeur général

Partenariat patient

À la suite de l'appel de projets du MSSS pour soutenir le déploiement et la pérennisation de l'approche de partenariat patient, un projet du CUSM a été retenu.

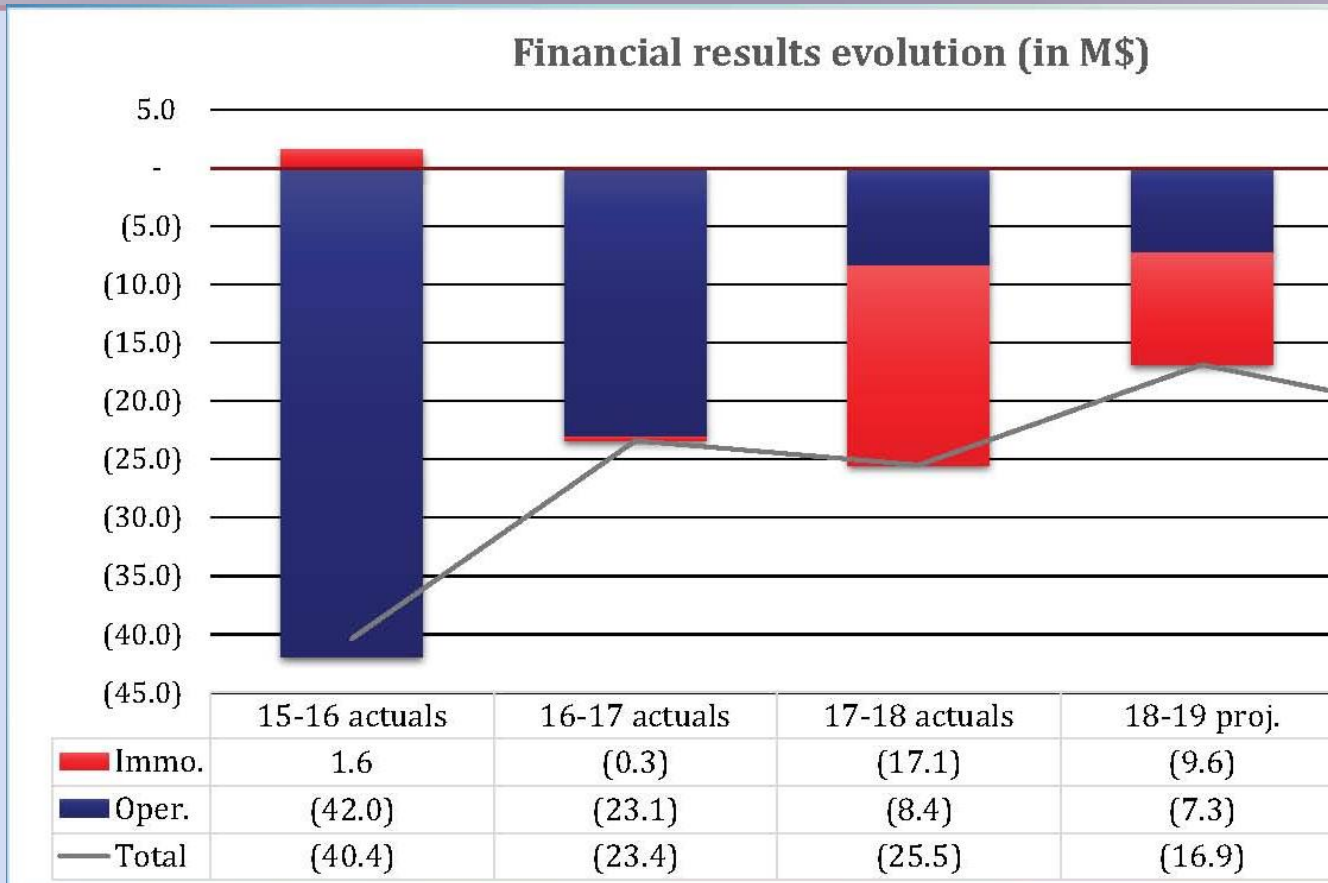
Titre: Participation des patients et de leurs proches (PPP) dans l'Approche adaptée à la personne âgée (AAPA)

Objectif: Améliorer la sécurité et l'expérience de soins des patients âgés en misant sur l'amélioration de la culture et des pratiques de partenariat de soins auprès des personnes âgées et de leurs proches.

Comité de projet multidisciplinaire: Comité des usagers, Patients partenaires, Soins infirmiers, Services multidisciplinaires, Pharmacie et Médecin.



Report of the President & Executive Director



- Deficit projected for both 18-19 & 19-20 are related to :
- Operations : expensive molecules & Optilab project
- Immo. : Glen parking



Report of the President & Executive Director

Dossiers avec le MSSS

- Évaluation CUSM 2018-2019
- Budget du Québec 2019-2020
 - ✓ Augmentation de 5,4 % du budget global des soins et des services de santé
 - ✓ Augmentation de 40 M\$/année pour financer des services supplémentaires fournis par des infirmières praticiennes
 - ✓ 215 M \$/année pour augmenter le personnel soignant dans les CHSLD, les résidences et les hôpitaux
 - ✓ 70 M \$/année à compter de 2019-2020 pour ajouter 900 places dans les CHSLD et autres centres résidentiels (impact sur clientèle NSA)
 - ✓ 100 M \$ en 2019 et 229 M \$ (2020-2025) pour soutenir l'industrie de l'intelligence artificielle
 - ✓ Financement des médicaments oncologiques et du Nusinersen (SPINRAZA[®])
 - ✓ Ostéointégration



Report of the President & Executive Director

Dossiers avec le MSSS

- Rencontre prévue avec le MSSS pour les enjeux cliniques
 - ✓ Dossiers à discuter :
 - Sévérité des patients à l'unité des Soins Intensifs Néonataux
 - Soins Cardio-vasculaires spécialisés
 - Volume des Neurostimulateurs
 - Îlots de Langherans
 - Clinique d'urgences oncologiques
 - Capacité du CUSM à réaliser sa mission tertiaire et quaternaire
 - ✓ Suivi des dossiers déjà soumis par le CUSM :
 - Réseau des sarcomes
 - Protonthérapie
 - Transfert de patients pour la phérèse LDL
 - Implants cochléaires



Report of the President & Executive Director

- Visite du ministre délégué : Dr Lionel Carmant (21 février 2019)
 - ✓ Protonthérapie
 - ✓ Opal

- Visite de la ministre de la Santé du Canada : Ginette Petitpas Taylor (14 mars 2019)
 - ✓ Visite de Institut de recherche – Centre de médecine innovatrice, Programme « Child-Bright », « Centre for Outcomes Research and Evaluation »



Rapport du président-directeur général

- Agrément
 - ❖ CUSM
 - ✓ Visite no 1 : 27 au 30 mai 2019
 - ✓ 2nd visit (between January 2020 and June 2021)
 - ✓ 3rd visit (between January 2022 and December 2023)
 - ❖ Optilab
 - ✓ April 9 to September 15, 2019
 - ✓ 5 site visits for the laboratory accreditation process
 - ✓ 13 inspectors over 4 days at the Glen Site

- Amorce de la démarche de planification stratégique avec le conseil d'administration



Rapport du président-directeur général

Visite des régions éloignées du réseau universitaire intégré de santé (RUIS) McGill :

- | | |
|---------------------------------|--------------|
| ✓ Nunavik | 4 et 5 mars |
| ✓ Terres-Cries de la Baie James | 4 et 5 mars |
| ✓ Nord du Québec | 13 février |
| ✓ Abitibi-Témiscamingue | 30 avril |
| ✓ Outaouais | À déterminer |
| ✓ Montérégie | 7 mai |



Report of the President & Executive Director

Research Update

- Science, Technology, Engineering, Arts and Mathematics (Steam) Project
 - ✓ Partnership with the English Montreal School Board (EMSB)
 - ✓ Multidisciplinary approach to learning
 - ✓ Working with the Trainee Council of the RI-MUHC, mentorship roles for young students

- Recruitment of the Executive Director and Chief Scientific Officer of RI-MUHC

- Patient Education Office
 - ✓ (Drs Fleischer and Posel)



8.2 Presentation

The Education Mission of the MUHC

Dr. Elene Khalil
Michel Sergerie

The Education Mission of the MUHC

Elene Khalil, MD CM, FRCP, FAAP

Director of Education

Michel Sergerie, RN, MSN, CCN(c)

Associate Director of Education



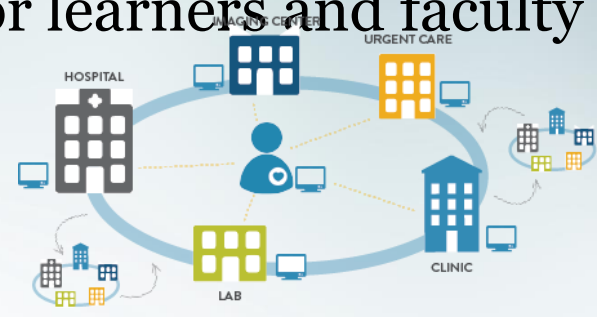
Goal

**Highest quality patient-centred
care *NOW* and into the *FUTURE***

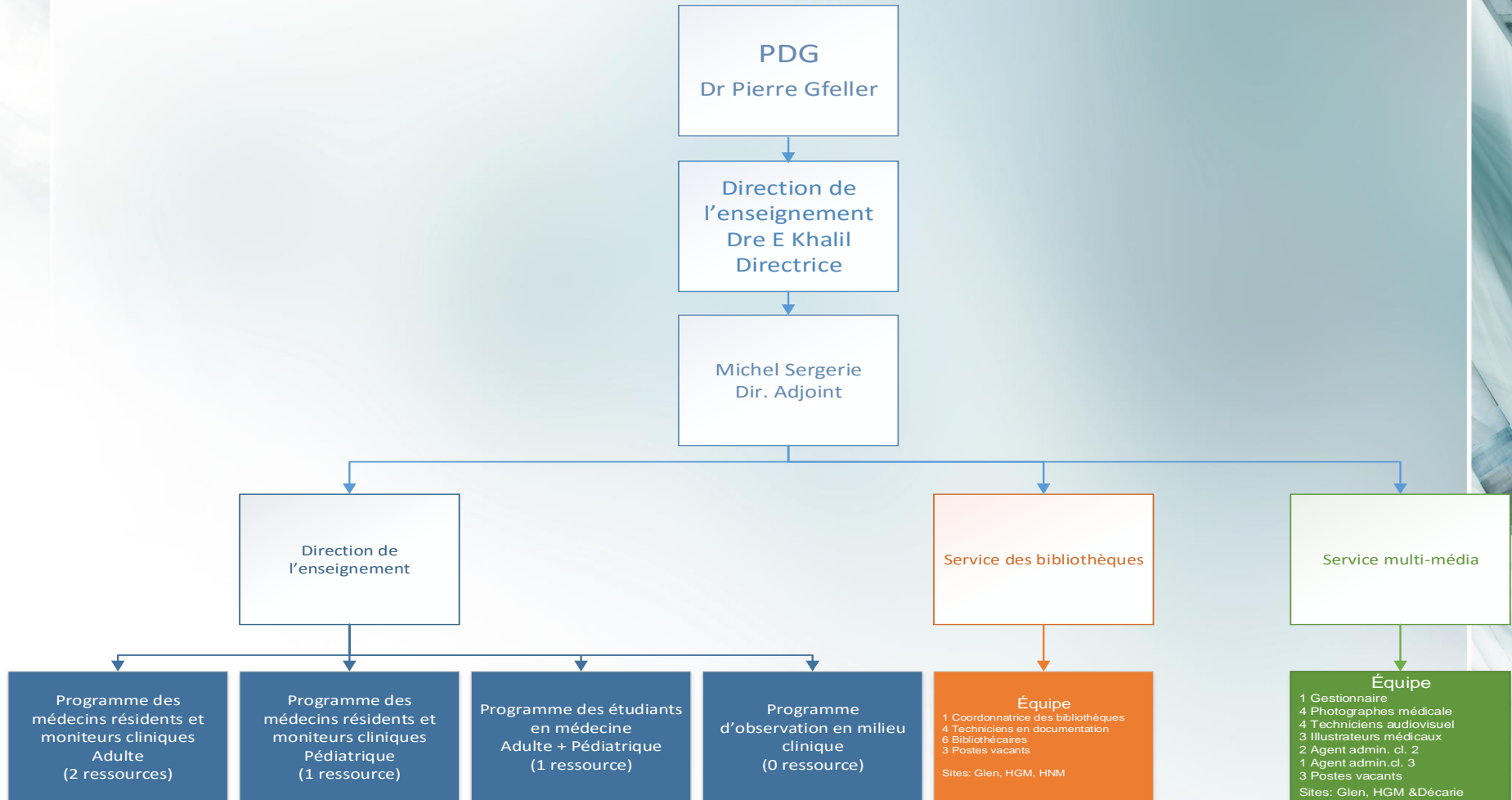


What is the Added Value of Education in Health Establishments?

- Reinforces focus on the patient
- Increases quality of care
- Enhances interdisciplinary/interprofessional collaboration for learners and faculty
- Improves knowledge and practice for learners and faculty
- Prepares our future professionals
- Retains and attracts strong staff



Reporting Structure



What Do We Do?

- **Bridge - Facilitator**

- Communication pole and interface with faculty, program directors/ medical chiefs and clinical directors (DSP, DSI, DSM etc.)



- **Spokesperson**

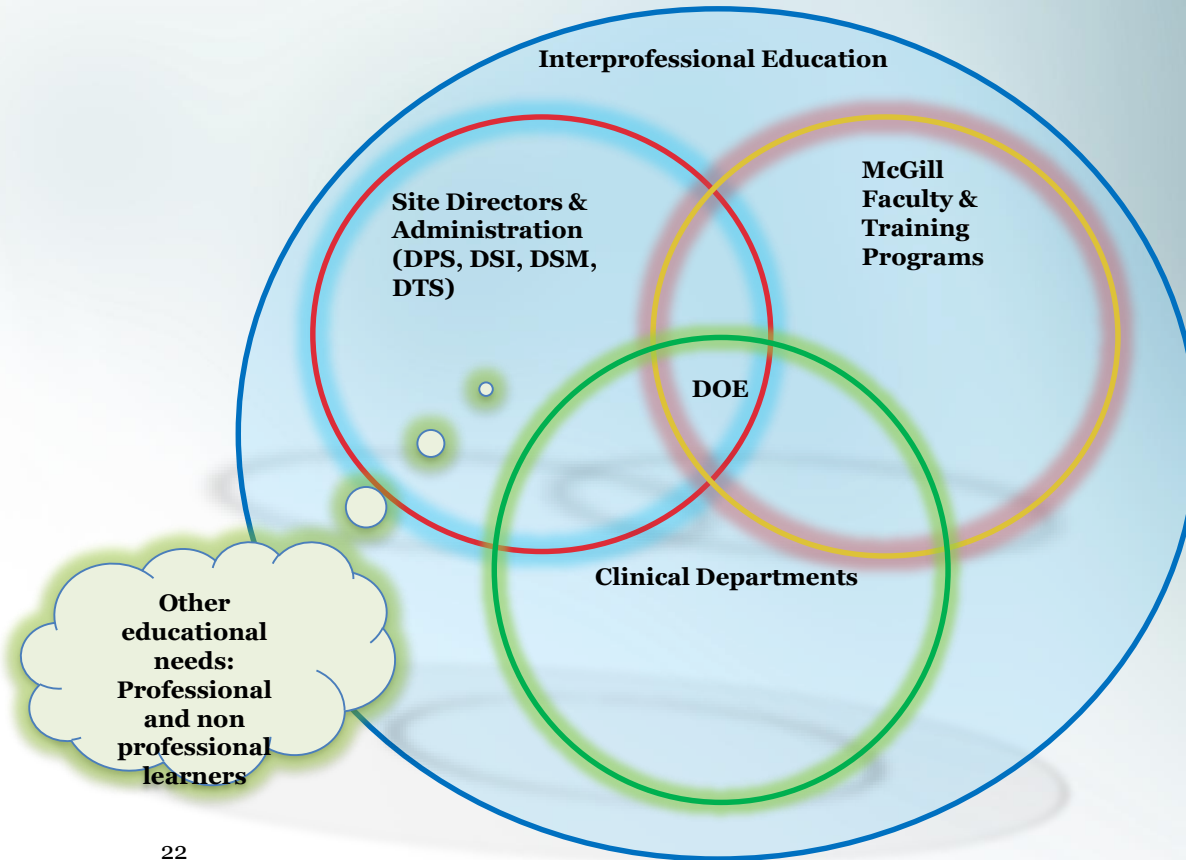
- Program directors/ medical chiefs and upper management

- **Leader**

- Development of local teaching activities/innovation, support programs, policies and chair teaching committees



How Do We Interface?



Values

To promote the highest quality, safe and efficient patient-centred care through education of current and future interprofessional members of the healthcare team.



Vision

The MUHC Directorate of Education will be the **leader in education** of current and future healthcare providers by promoting a **safe, positive, engaging and collaborative environment** where the synergies of interprofessional partnerships and effective resource allocation will benefit all learners across health professions and through all stages of learning. Through the fostering and strengthening of partnerships with all teaching institutions, particularly McGill University, it will support educational endeavors that **will encourage all health professionals to develop within the tertiary/quaternary care delivery mission of the MUHC.**



Mission

- Provide a safe and conducive teaching and **learning environment** for the interprofessional team members and learners of the entire health care work force of the MUHC.
- Develop and foster **partnerships** within the MUHC's internal and external educational network.
- Provide **leadership** and organization of the passionate and dedicated **educators** of the MUHC.
- Encourage engaging **teaching methods and attitudes**.

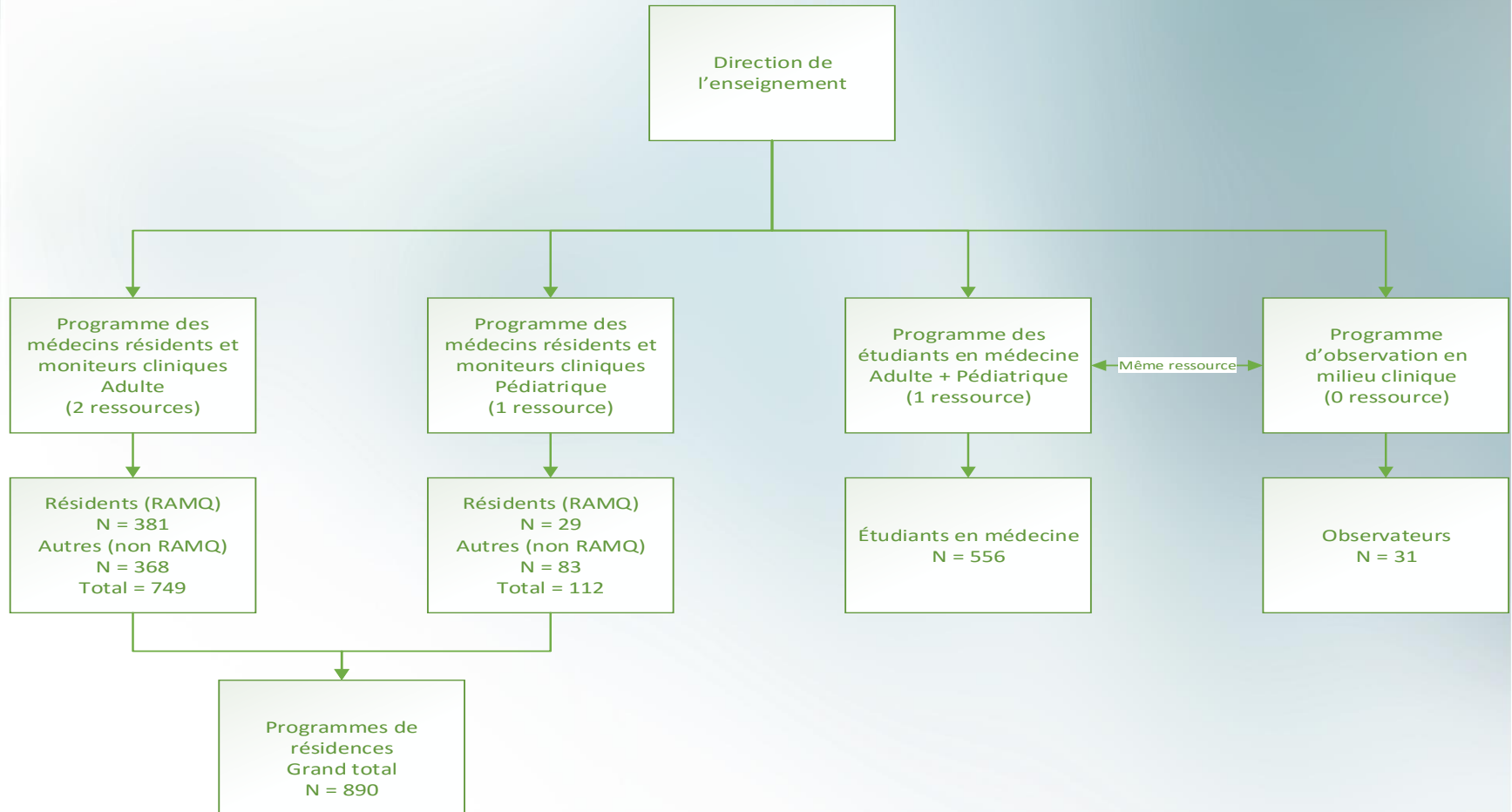


Mission

- Serve as a **repository** for educational information, resources, support for all learners of the MUHC.
- Enhance **educational outreach** throughout the McGill RUIS via partnership with telehealth.
- Ensure that available **financial resources are allocated** based on defined selection criteria.
- Facilitate **innovative teaching and assessment tools**-including **simulation**.
- Promote **scholarly activity** in medical education.



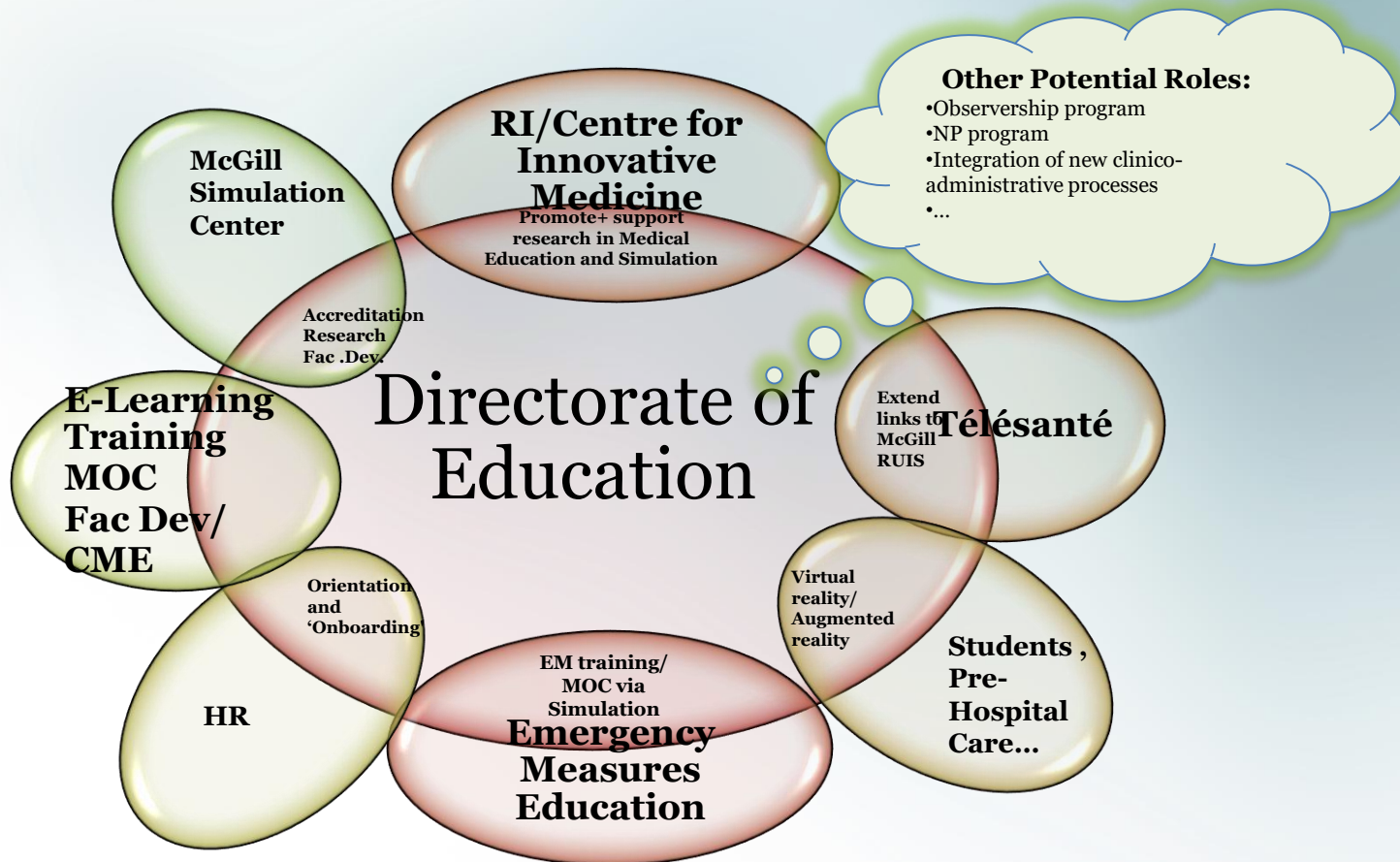
Medical Education



Patient Centred Care



Expanding and Solidifying the Education Network



McGill Montreal Network Establishments

**Centre intégré
universitaire de santé
et de services sociaux
du Centre-Ouest-
de-l'Île-de-Montréal**

Québec 

**Centre intégré
universitaire de santé
et de services sociaux
de l'Ouest-de-
l'Île-de-Montréal**

Québec 

**Centre universitaire
de santé McGill**



**McGill University
Health Centre**



McGill RUIS

- **63 %** of Quebec's territory
- **7** different regional authorities
- Serves **population of 1.8 million**



MUHC Home page information retrieved on Oct. 2018: <https://muhc.ca/homepage/page/muhc-glance>



Current Initiatives

- Definition and evaluation of learning environment
- Harmonization of processes and practices
- Database access
- Supervisor preparedness/ongoing faculty development



Current Initiatives

- Administrative support: clarity of roles & responsibilities
- Web presence
- Expanding the offer- exploring potential benefits of centralizing education for all learners
- Accreditation: PGME + institutional



Future Directions:

- On site + in situ simulation network
- Negotiations of an MOU with: RI + Steinberg + Shriners
- Exploration for funding and space
- Extending the Education Directorate to other health professions



“Connecting the Dots”

- **Facilitate all aspects of interprofessional education:**
 - **Spectrum of learners and healthcare workers**
- **Promote research and innovation:**
 - **Clinical**
 - **Medical education**



Goal

**Highest quality patient-centred
care *NOW* and into the *FUTURE***



Questions?



Historical Perspective

- Before yr 2000
 - PGME Adults :RVH (2), MGH (1) & MNH (1)
 - Medical affairs under DPS Directorate
 - PGME Peds: MCH (1)
 - Under DPS/Outpatient manager
 - UGME Peds: MCH (1)
 - Under PD UGME/Outpatient manager
- After yr 2000
 - Merger of sites for Medical affairs under DPS Directorate
 - Adults :RVH (2)
 - Peds: PGME & UGME no change



- 2012 Nomination of the first Education Director + DPS
- 2014 Regrouping of library and audiovisual services under DPS
- 2016 adding a resource to the UGME adult sites
- 2017 Creation of the Education Directorate
 - Nomination of the Associate Director (August)
 - Nomination of the Director (December)
- 2018 new reporting structure
- 2018 adult and pediatric PGME under one directorate (July 2018)



A Common Vision for Education

- **Focal entry point for EDUCATION activities**
- **Integration of teaching priorities in each establishment's strategic plan**
- **Commitment for the continuous improvement of learning environments**
- **Apply evidence-informed teaching practices**
- **Combine our strengths and work together toward shared goals throughout McGill's clinical sites**



Partnership/committees

MUHC

- Comité de Régie
- Comité de direction
- Salle de pilotage
- Medical Advisory Committee (MAC)
- MUHC-McGill Education meeting
- Comité de coordination des IPS
- DPS Managers Meeting
- Resident committee

McGill University

- DPS & Dean's Medical Manpower Cmt.
- Education Leadership Council (ELC)
- Learning Environment Action Panel (LEAP)
- Faculty Post Graduation Medical Education (FPGME)
- Simulation Education Committee
- PGME program accreditation collaboration
- UGME program accreditation collaboration
- Patient Safety workgroup





9. Varia



Vos hôpitaux, Vos questions

<https://cusm.ca/questions/form/vos-h%C3%B4pitaux-vos-questions>

Your Hospital, Your Questions

<https://muhc.ca/questions/form/your-hospitals-your-your-questions>



10. Question Period



11. Termination